

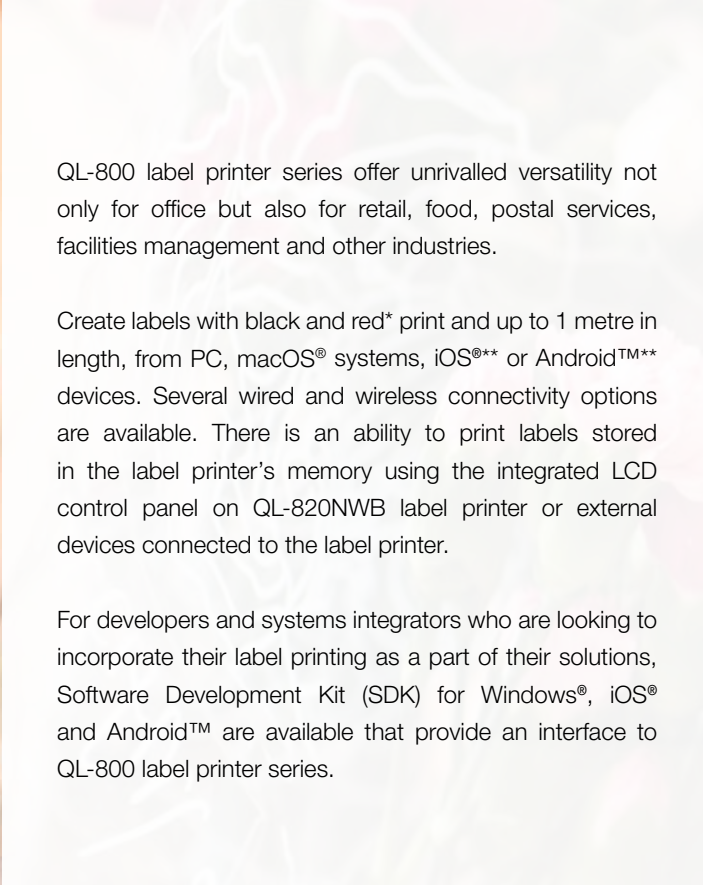


## Professional Label Printer Series

- Print in Black and Red to highlight important information
- Wide range of connectivity options
- PC, macOS® systems, iOS® and Android™ compatibility
- Standalone printing without a PC connection using QL-820NWB label printer







QL-800 label printer series offer unrivalled versatility not only for office but also for retail, food, postal services, facilities management and other industries.

Create labels with black and red\* print and up to 1 metre in length, from PC, macOS® systems, iOS®\*\* or Android™\*\* devices. Several wired and wireless connectivity options are available. There is an ability to print labels stored in the label printer’s memory using the integrated LCD control panel on QL-820NWB label printer or external devices connected to the label printer.

For developers and systems integrators who are looking to incorporate their label printing as a part of their solutions, Software Development Kit (SDK) for Windows®, iOS® and Android™ are available that provide an interface to QL-800 label printer series.



## Features



QL-800



QL-810W



QL-820NWB

|  | QL-800 | QL-810W | QL-820NWB |
|--|--------|---------|-----------|
| Fast print speed – number of labels per minute   | 93     | 110     | 110       |
| Print labels with both Black and Red* print  | •      | •       | •         |
| Label design software for PC or macOS® system (P-touch Editor)   | •      | •       | •         |
| Built-in label design software for PC or macOS® systems with no software or driver installation required (P-touch Editor Lite)     | •      | •       |           |
| USB  | •      | •       | •         |
| Wi-Fi® / AirPrint®   |        | •       | •         |
| Wired Ethernet   |        |         | •         |
| Bluetooth® wireless connection to iOS® or Android™ devices   |        |         | •         |
| Standalone print of labels stored in label printer memory  |        |         | •         |
| Optional Rechargeable Li-ion battery without power sources required  |        | •       | •         |
| Software Development Kit (SDK) for Microsoft® Windows****, iOS® and Android™ devices to add label printing to customised solutions | •      | •       | •         |

Models availability may vary by country. Please contact your local Brother office for more information.  
\* Requires DK-22251 62mm x 15.24m Red/Black on White Continuous Length Paper tape.  
\*\* Red print capability from iPrint&Label mobile app is available.  
\*\*\* QL-800 label printer supports only Microsoft® Windows® SDK.

## Versatile labelling options

Equipped with fast print speed and with the most connectivity options, QL-800 label printer series are the ideal solution for many business applications.

### Print Black and Red\* text without ink

Draw attention to important information by including red and black information on labels. Ideal for highlighting use-by dates, allergens and any other critical information.



### Wide range of connectivity options

All models allow easy connection to computers using USB. QL-810W label printer can incorporate with Wi-Fi®. While the flagship QL-820NWB label printer has additional Wired network and Bluetooth® wireless connectivity.

### Create labels in various sizes

Labels are available in a variety of Die-cut (pre-cut sizes) or Continuous length rolls that allow the built-in cutter to trim the label to the precise length and up to one metre.



### Print from Desktop, Mobile devices or Standalone

All models are PC or macOS® systems compatible. QL-810W and QL-820NWB label printers can connect to Smartphones and tablets using built-in wireless connections. Select and print labels stored in the memory of QL-820NWB label printer using the large LCD display and integrated control panel.

\* Requires DK-22251 62mm x 15.24m Red/Black on White Continuous Length Paper tape to print in Black and Red.



## Software solutions

With label design mobile app for computer, mobile devices and SDK to integrate with QL-800 label printer series into end-users applications, select the best option to print.



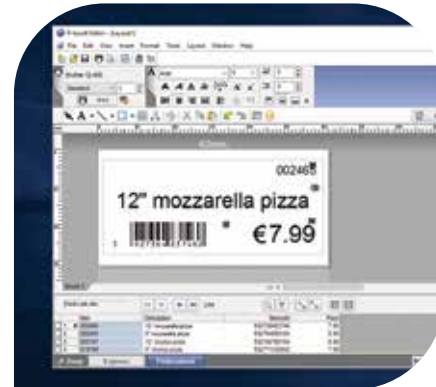
### Brother's P-touch Editor Lite\* / P-touch Editor Lite LAN\*

In-built inside QL-800 and QL-810W label printers, this easy-to-use label design software works without the need to install software or drivers. Work like a USB flash drive, simply connect to PC or macOS® systems using USB and launch the software from the drive. Include images, frames and any fonts in the label design to print.

Network version is also available. Simply run the software to allow any computer in the office to print labels to one label printer with no printer driver and software installation required.

### Brother's P-touch Editor with Microsoft® Office® Plugin

Design professional labels which include images and logos, barcodes and frames. Link to database files such as Excel® or csv files etc and print as many labels quickly and efficiently. Microsoft® Office® plugin allows highlighting, clicking and printing from Word®, Excel® or Outlook®.



### Brother's iPrint & Label mobile app\*\* for iOS®, Android™ Smartphones and tablets

Print labels on QL-810W and QL-820NWB label printers via the free Brother's iPrint&Label mobile app. Connect via Wi-Fi® or Bluetooth® wireless connection with QL-820NWB label printer and choose one of the pre-defined templates or quickly design label from scratch. This mobile app is available from mobile device's app store by searching for "Brother iPrint&Label".

### Software Development Kit (SDK) for Windows®, iOS® and Android™

System integrators and software developers can use the various Brother's Software Development Kit that allow easy integration of label printing directly to their own mobile apps and software.

For more information please visit  
<https://www.brother.co.jp/eng/dev/index.aspx>

\* Black print capability only. Uses P-touch Editor for Black and Red printing.  
\*\* Red print capability from iPrint&Label mobile app is available.



## Advanced functionality

QL-820NWB label printer with its standalone print function and remote FTP template update allows label printing directly from the control panel. This advanced connectivity options offer the widest compatibility for all devices.

### Standalone label printing

QL-820NWB label printer has a large memory space to store label templates designed in P-touch Editor. Label templates can be uploaded into the label printer's memory and accessed using the integrated control panel and backlit graphical LCD display. Ideal for printing current or future date and time on labels use in Food and Retail industries.



### Remote template update via FTP

Where QL-820NWB label printer is deployed at multiple locations, updating the templates in all label printers will be operation intensive. The label printer can automatically connect to the FTP remote server. If there is any new templates, remote update will be performed automatically. This will help the organisation save time and money, while ensuring consistent operation at remote locations. This remote update can be done directly to the label printer via internet, without the need of a computer connection.

### AirPrint®\* and Bluetooth® wireless connection with Made for iPhone (iPod®, iPhone®, iPad®) Compatibility

QL-810W and QL-820NWB label printers can support Apple® AirPrint®\* with compatible mobile apps on iOS® devices and macOS® devices. QL-820NWB label printer offers Bluetooth® wireless connectivity that can connect to iOS® and Android™ devices easily.



\* iOS® and macOS® systems can only support Black print only when using the default AirPrint® function. Red print capability is available from iOS® devices using AirPrint® with the mobile apps developed using Brother Software Development Kit (SDK).



## Office

There are many label applications around office. From address labels for envelopes to parcels, identify the contents of the files and storage boxes easily. Label the shelves so that items can be returned to the correct place.

The Black and Red\* printing capability enables essential information to be highly visible, such as validity dates on visitor badges. The continuous length film rolls are ideal for indoor signage, helping Facilities Managers to create bespoke signs on demand.

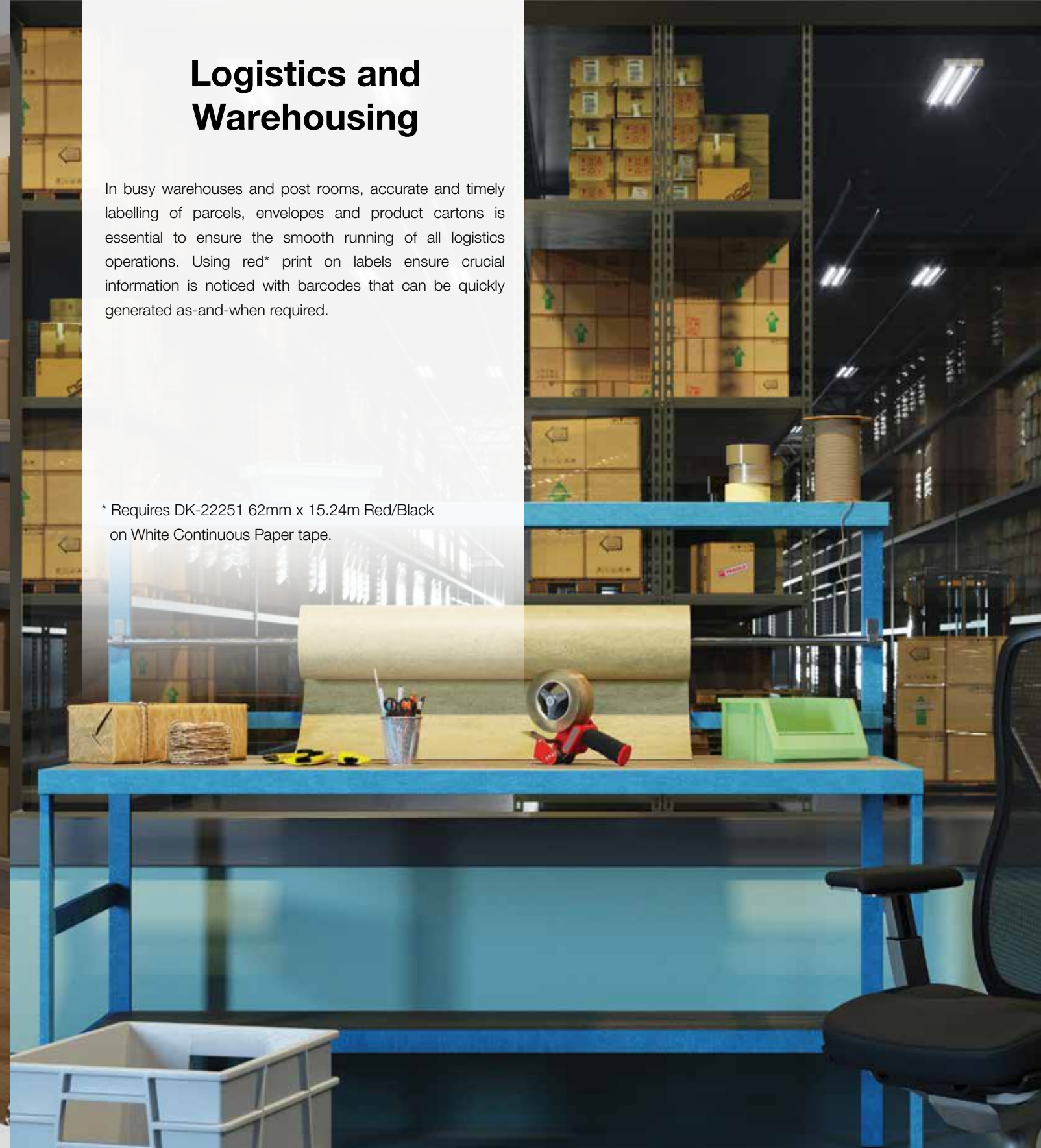
\* Requires DK-22251 62mm x 15.24m Red/Black on White Continuous Paper tape.



## Logistics and Warehousing

In busy warehouses and post rooms, accurate and timely labelling of parcels, envelopes and product cartons is essential to ensure the smooth running of all logistics operations. Using red\* print on labels ensure crucial information is noticed with barcodes that can be quickly generated as-and-when required.

\* Requires DK-22251 62mm x 15.24m Red/Black on White Continuous Paper tape.



Visitor badges



Postage labels



Document filing



Indoor signage



Handling labels



Temporary signage



Shipping labels



Product packaging



Retail

Conveying product pricing and any special offers to the shoppers quickly is crucial in the retail industry. Print pricing labels for product tags can include barcodes. Use red\* print to highlight special offers or promotions by creating eye-catching indoor signage.

\* Requires DK-22251 62mm x 15.24m Red/Black on White Continuous Paper tape.



Pricing and Barcode labels



Promotion signage

Food

On-demand label printing is a critical part of the food industry, such as highlighting allergen information to consumers, show use-by/best before dates and product pricing including EAN-8 / EAN-13 barcodes.

QL-820NWB label printer with its standalone label printing function is ideal for counter-top use and printing labels on-demand. Takeaway outlets can print details of the orders, including address information where delivery is required.



Takeaway orders



Shelf-edge labelling



DK rolls for QL-800 Label Printer Series

Wide range of labels are available in paper and film material, die-cut labels or continuous length labels rolls.

| DK Die-Cut Labels                 | Material | Colour | Size        | Item No. |
|-----------------------------------|----------|--------|-------------|----------|
| Standard address label (400/roll) | Paper    | White  | 29 x 90 mm  | DK-11201 |
| Large address label (400/roll)    | Paper    | White  | 38 x 90 mm  | DK-11208 |
| Small address label (800 roll)    | Paper    | White  | 29 x 62 mm  | DK-11209 |
| Shipping label (300/roll)         | Paper    | White  | 62 x 100 mm | DK-11202 |
| File folder label (300/roll)      | Paper    | White  | 17 x 87 mm  | DK-11203 |
| Multi-purpose label (400/roll)    | Paper    | White  | 17 x 54 mm  | DK-11204 |
| Square label (1000/roll)          | Paper    | White  | 23 x 23 mm  | DK-11221 |
| CD/DVD label (100/roll)           | Film     | White  | 58 mm       | DK-11207 |
| Round label (1200/roll)           | Paper    | White  | 12 mm       | DK-11219 |
| Round label (1000/roll)           | Paper    | White  | 24 mm       | DK-11218 |

| DK Continuous-Length Tapes - 30.48m | Material            | Colour | Size  | Item No.  |
|-------------------------------------|---------------------|--------|-------|-----------|
| Continuous length                   | Paper               | White  | 12 mm | DK-22214  |
| Continuous length                   | Paper               | White  | 29 mm | DK-22210  |
| Continuous length                   | Paper               | White  | 38 mm | DK-22225  |
| Continuous length                   | Paper               | White  | 50 mm | DK-22223  |
| Continuous length                   | Paper, non-adhesive | White  | 54 mm | DK-N55224 |
| Continuous length                   | Paper               | White  | 62 mm | DK-22205  |
| Continuous length                   | Paper, removable    | White  | 62 mm | DK-44205  |
| Continuous length                   | Paper, removable    | Yellow | 62 mm | DK-44605  |

| DK Continuous-Length Tapes - 15.24m | Material | Colour | Size  | Item No. |
|-------------------------------------|----------|--------|-------|----------|
| Continuous length                   | Film     | White  | 29 mm | DK-22211 |
| Continuous length                   | Film     | White  | 62 mm | DK-22212 |
| Continuous length                   | Film     | Yellow | 62 mm | DK-22606 |
| Continuous length                   | Film     | Clear  | 62 mm | DK-22113 |
| Continuous length - Black/Red print | Paper    | White  | 62 mm | DK-22251 |

Accessories

PA-BU-001 Rechargeable Li-ion battery (sold separately)

PA-BU-001 Rechargeble Li-ion battery can be mounted onto the base of QL-810W and QL-820NWB label printers to perform label printing standalone without any power sources. It is an ideal solutions for mounting in trollies or pushcarts for exhibition badges printing.

With a fast-charge of under 2 hours 30 minutes, the battery can last up to 4300 labels (Monochrome) or 1400 labels (Colour) prints per charge\*.



\* Continuous label printing using USB when fully charged.  
Consumables availability may vary by country. Please contact your local Brother office for more information.



Specification

| QL-800                                      |   | QL-810W   |  | QL-820NWB   |  |
|---|---|---|--|---|--|
| Printing / Media                            |   |   |  |   |  |
| Printing technology                         | Direct thermal with 2 colour print capability                         |   |  |   |  |
| Print resolution                            | 300 dpi x 300dpi (Standard) / 300 dpi x 600dpi (High resolution mode) |   |  |   |  |
| Print speed (single colour)                 | Maximum 148mm per second, 93 labels per minute                        | Maximum 176mm per second, 110 labels per minute   |  |   |  |
| Print speed (two colour)                    | 24mm per second, 15 labels per minute                                 |   |  |   |  |
| Label width                                 | 12mm - 62mm   |   |  |   |  |
| Maximum print width                         | 58mm  |   |  |   |  |
| Maximum print length                        | 1 metre   |   |  |   |  |
| Media sensor type                           | Reflective  |   |  |   |  |
| Cutter                                      | Yes, (full cut / guillotine type)                                     |   |  |   |  |
| Media types                                 | DK Rolls (DK Die-cut labels / DK Continuous Length tape)              |   |  |   |  |
| LCD   |   |   |  |   |  |
| Type  | -   | -   | 320 dots x 120 dots Graphic LCD with backlight |   |  |
| Connectivity                                |   |   |  |   |  |
| USB   | USB version 2.0 full-speed  |   |  |   |  |
| USB host capability                         | -   | -   | Yes (HID class)                                |   |  |
| Bluetooth® wireless connection              | -   |   |  | Bluetooth® Classic  |  |
| Bluetooth® Profile                          | -   |   |  | SPP (Serial Port Profile)<br>OPP (Object Push Profile)<br>BIP (Basic Imaging Profile)<br>HCRP (Hard Copy Cable Replacement Profile) |  |
| iOS® and Android™ compatibility             | -   | Yes, (Wi-Fi®)   | Yes, (Wi-Fi® / Wired LAN / Bluetooth® Classic) |   |  |
| Wireless LAN                                | -   | IEEE 802.11b/g/n  |  |   |  |
| Wireless LAN security (Infrastructure mode) | -   | WEP, WPA-PSK/WPA2-PSK (TKIP/AES),<br>LEAP (CKIP), EAP-FAST (TKIP/AES),<br>PEAP (TKIP/AES), EAP-TTLS (TKIP/AES),<br>EAP-TLS (TKIP/AES) |  |   |  |
| AirPrint®                                   | -   | Yes   |  |   |  |
| Wired LAN                                   | -   | -   | 10/100 Base-TX                                 |   |  |
| Memory                                      |   |   |  |   |  |
| Flash (for label templates)                 | -   | 6MB   |  |   |  |
| Locations (for label templates)             | -   | 99  | 255  |   |  |
| Power                                       |   |   |  |   |  |
| Power                                       | 220V - 240V AC internal power supply                                  | 100V - 240V AC External Power adapter (Auto switching)  |  |   |  |
| Battery (not included)                      | -   | PA-BU-001 Rechargeable Li-ion battery   |  |   |  |
| Battery print yield                         | -   | 4300 labels (Monochrome) / 1400 labels (2 Colours)  |  |   |  |
| Battery charging time                       | -   | Less than 2 hours 30 minutes  |  |   |  |
| Weight / Dimension                          |   |   |  |   |  |
| Dimension                                   | 125mm (W) x 213 (H) x 142mm (D)                                       | 125mm (W) x 234mm (H) x 145mm (D)   |  |   |  |
| Weight                                      | 1.15kg  | 1.12kg  | 1.16kg   |   |  |

Specification

| QL-800  |  | QL-810W   |  | QL-820NWB   |  |                                     |  |
|---|--|---|--|---|--|-------------------------------------|--|
| Package content   |  |   |  |   |  |                                     |  |
| In the box  |  | Label Printer<br>DK-11201 29mm x 90mm x 100pc<br>Standard Address Label, Die-cut<br>Paper<br>DK-22251 62mm x 5m Red/Black on<br>White Continuous Length Paper tape<br>USB cable<br>AC Power adapter<br>User guide   |  | Label Printer<br>DK-11201 29mm x 90mm x 100pc Standard Address Label, Die-cut Paper tape<br>DK-22251 62mm x 5m Red/Black on White Continuous Length Paper tape<br>USB cable<br>AC Power adapter<br>User guide |  |                                     |  |
| Software / Firmware   |  |   |  |   |  |                                     |  |
| SDK availability<br><a href="https://www.brother.co.jp/eng/dev/index.aspx">https://www.brother.co.jp/eng/dev/index.aspx</a> |  | b-PAC (for Windows®)  |  | b-PAC (for Windows®)<br>Brother Print SDK for Android™<br>Brother Print SDK for iPhone®/iPad® (for iOS®)  |  |                                     |  |
| Supported printer command   |  | Raster  |  | Raster<br>ESC/P<br>P-touch Template   |  | ESC/P<br>P-touch Template<br>Raster |  |
| Barcode symbologies<br>(using P-touch Editor)   |  | CODE39, CODE128, UCC/EAN128 (GS1-128), ITF (I-2/5), CODABAR (NW-7), UPC-A, UPC-E, EAN13, EAN8, ISBN-2 (EAN13 AddOn2), ISBN-5 (EAN13 AddOn5), Laser Barcode, POSTNET, RSS(RSS14 Standard, RSS14 Truncated, RSS14 Stacked, RSS14 Stacked Omni, RSS Limited, RSS Expanded, RSS Expanded Stacked), PDF417 (Standard, Truncate, Micro), QR code (Model 1, Model 2, Micro), Data Matrix (ECC Square, ECC Rectangular), MaxiCode (Model 2, Model 3, Model 4, Model 5)<br>RSS symbols / CODE93 / POSTNET / UPC/EAN EXTENSION / MSI / QR Code (model 1, model 2, micro QR) PDF417 (Standard, Truncate, MicroPDF417) / Data Matrix (ECC200 Square, ECC200 Rectangular) / MaxiCode / Aztec |  |   |  |                                     |  |
| Barcode symbologies<br>(Built-in printer firmware)  |  | CODE39, CODE128, UCC/EAN-128 (GS1-128), ITF (I-2/5), CODABAR(NW-7), UPC-A, UPC-E, EAN13 (JAN13), EAN8, GS1 DataBar (RSS) (GS1 DataBar Omnidirectional, GS1 DataBar Truncated, GS1 DataBar Stacked, GS1 DataBar Stacked Omnidirectional,GS1 DataBar Limited,GS1 DataBar Expanded, GS1 DataBar Expanded Stacked), PDF417 (Standard, Truncate, Micro), QR Code (Model 1, Model 2, Micro), Data Matrix (ECC200 Square, ECC200 Rectangular), MaxiCode, CODE93, POSTNET, UPC-E EXTENTION  |  |   |  |                                     |  |
| Internal font   |  | Bitmap fonts: Letter Gothic Bold, Helsinki, Brussels, San Diego, Brougham Font sizes: 24, 32, 49 dots<br>Outline fonts: Letter Gothic Bold, Helsinki, Brussels<br>Font sizes: 33 - 400 dots (22 sizes)  |  |   |  |                                     |  |
| System Requirement  |  |   |  |   |  |                                     |  |
| Interface   |  | Windows®: USB Port (USB Spec. 1.1, 2.0 or 3.0 protocol)<br>IEEE802.11b/g/n Wireless LAN - 10/100 BASE-TX Wired LAN - Bluetooth® Classic<br>mac®: USB Port (USB Spec. 1.1 or 2.0 protocol)<br>IEEE802.11b/g/n Wireless LAN - 10/100 BASE-TX Wired LAN - Bluetooth® Classic   |  |   |  |                                     |  |
| Hard Disk Requirement   |  | Windows®: 600MB or more ; mac®: 500MB or more   |  |   |  |                                     |  |
| Microsoft® Office® Support  |  | Microsoft® Word® / Excel® / Outlook®  |  |   |  |                                     |  |

**brother**  
at your side

"Made for iPod," "Made for iPhone," and "Made for iPad" mean that an electronic accessory has been designed to connect specifically to iPod®, iPhone® or iPad® respectively and has been certified by the developer to meet Apple performance standards. Apple is not responsible for the operation of this device or its compliance with safety and regulatory standards. Please note that the use of this accessory with iPod®, iPhone® or iPad® may affect wireless performance.

iPad®, iPhone® and iPod® are trademarks of Apple Inc., registered in the U.S. and other countries.

The Bluetooth® wireless connection word mark and logos are owned by the Bluetooth SIG, Inc. and any use of such marks by Brother Industries, Ltd. is used under license.

All specifications are correct at time of printing. Brother is a registered trademark of Brother Industries Ltd. Brand product names are registered trademarks or trademarks of their respective companies.